

*Trivellore Raghunathan
Patricia Berglund
Peter Solenberger*

***Multiple Imputation in
Practice : With Examples
Using IVEware
(Supplementary File with
Color Graphs)***

Graphs from All Chapters

Figure 1.1: Illustrations of patterns of missing data

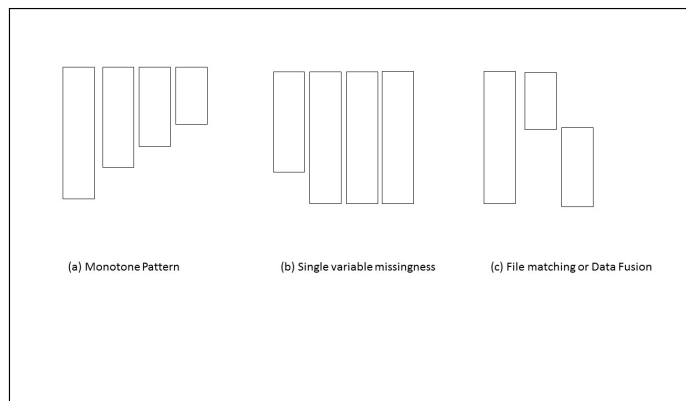


Figure 1.2: Scatter plots for the three-variable example

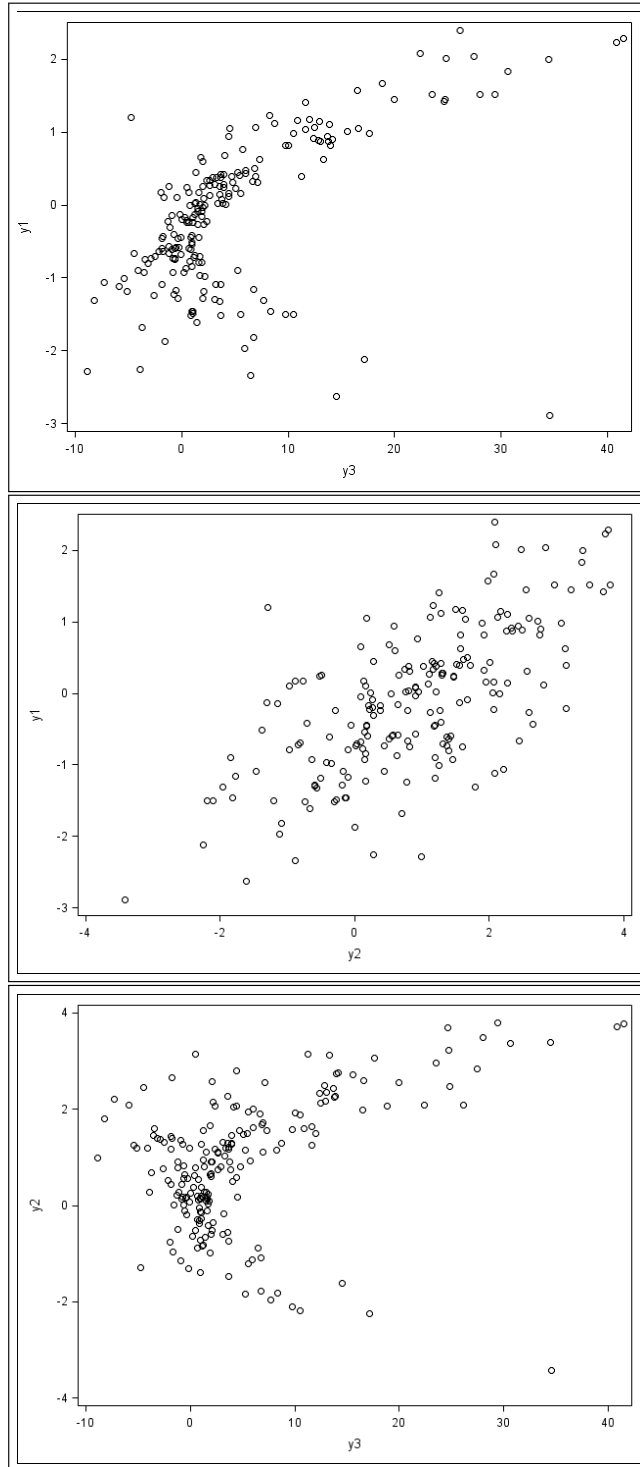


Figure 1.3: A schematic display of synthetic data sets produced by **SYN-THE SIZE** module in *IVEware*.

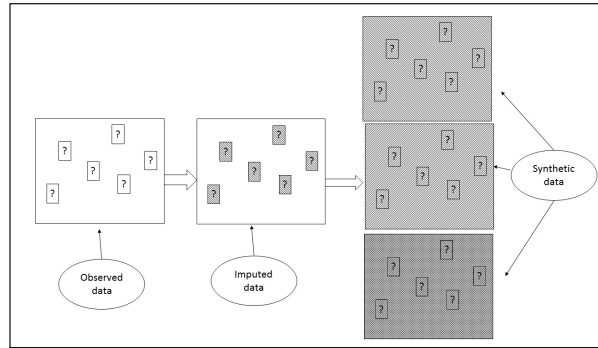


Figure 2.1: Diagnostics plots to compare the observed and imputed values of systolic blood pressure

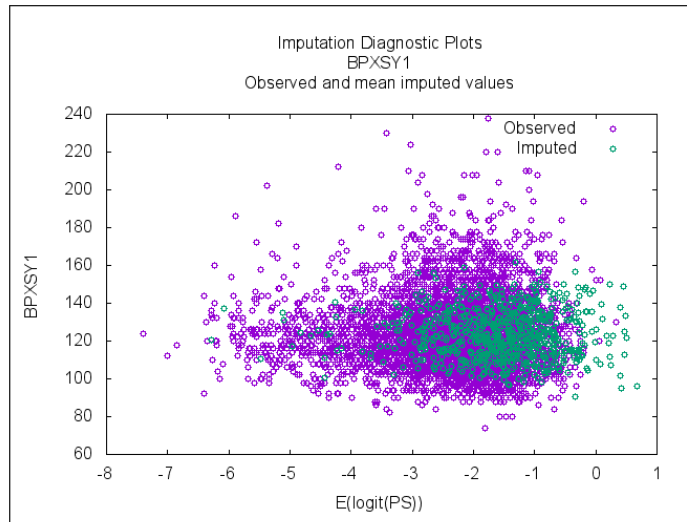


Figure 3.1: Regression diagnostics plots

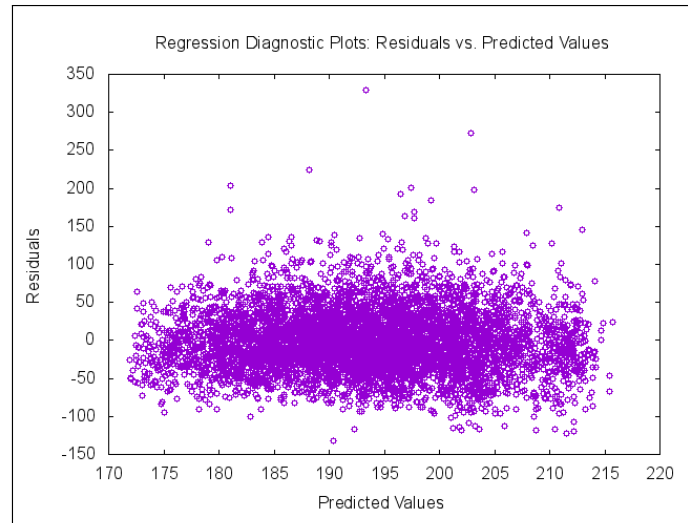


Figure 7.1: Schematics used in specifying structural equation models

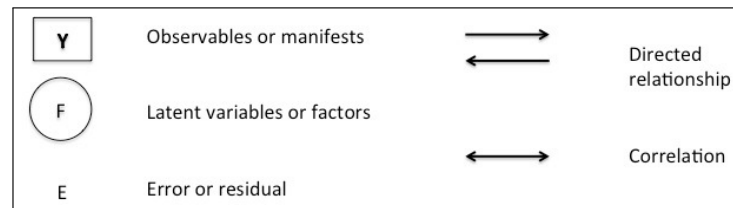


Figure 7.2: An example of a structural equation model specification

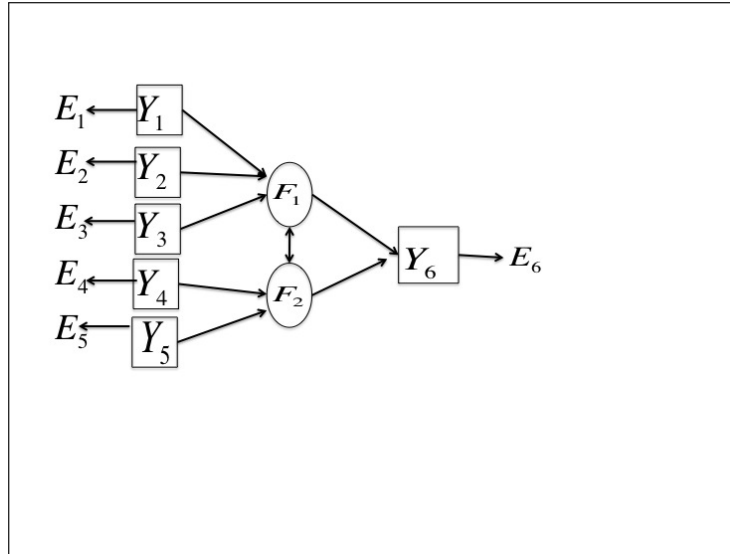


Figure 7.3: Schematic for structural equation model using National Merit Twin Study data

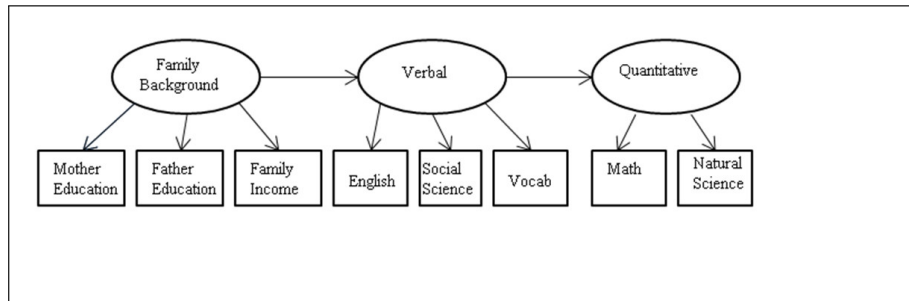


Figure for SEM Exercise 7.1: Path Diagram

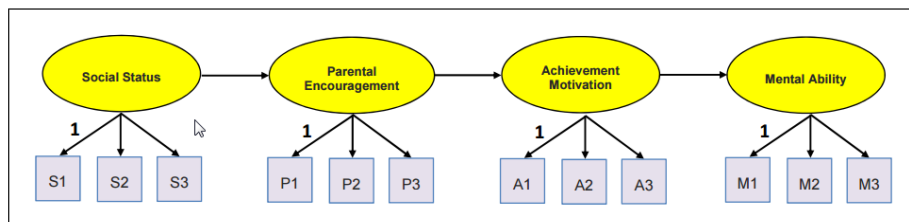


Figure 8.1: Estimated daily mean difference between Bup-NX and clonidine groups

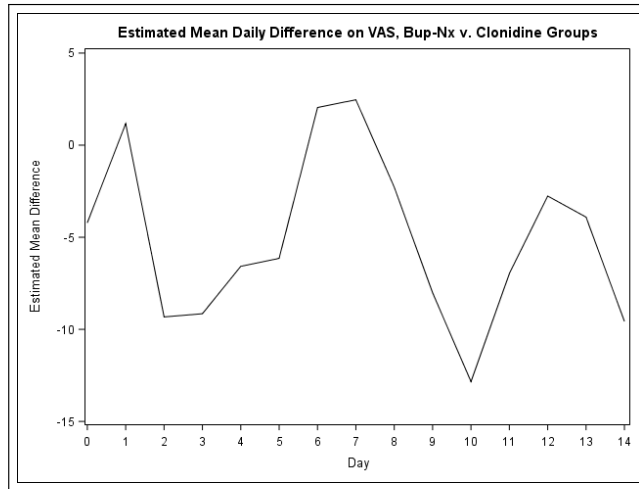


Figure 8.2: Head Wages/Salary (1998) by Observed v. Imputed

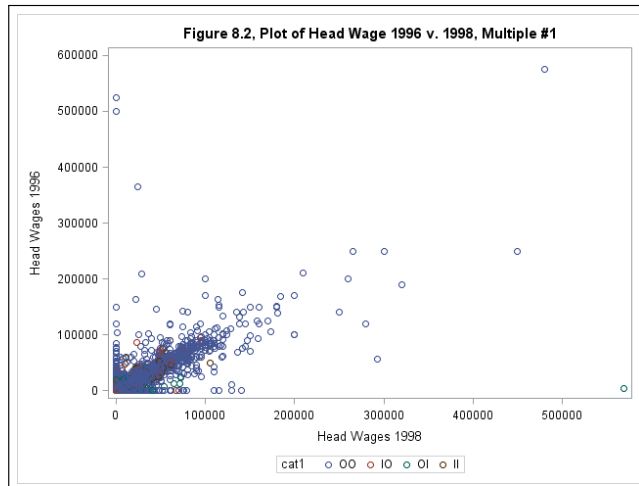


Figure 8.3: Head Wages/Salary(1996) v. Head Wages/Salary(1998), Observed v.Imputed

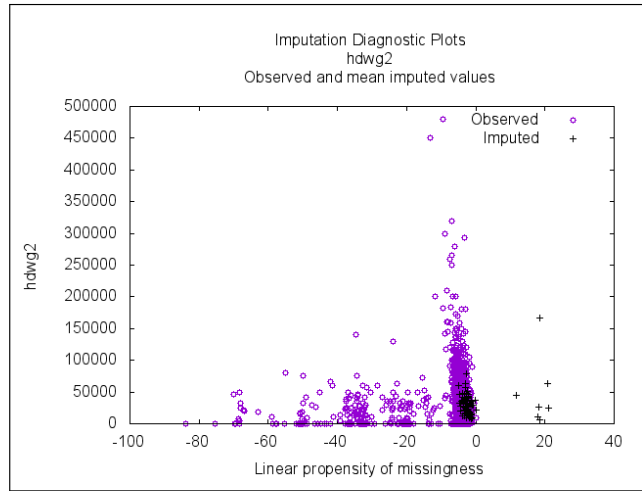


Figure 8.4: Head's Wages/Salary by Year and Sample

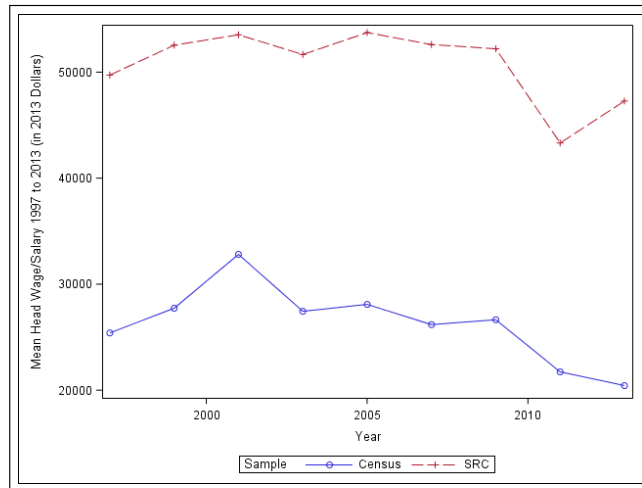


Figure 8.5: Individual Trends of Head Wages/Salary by Year

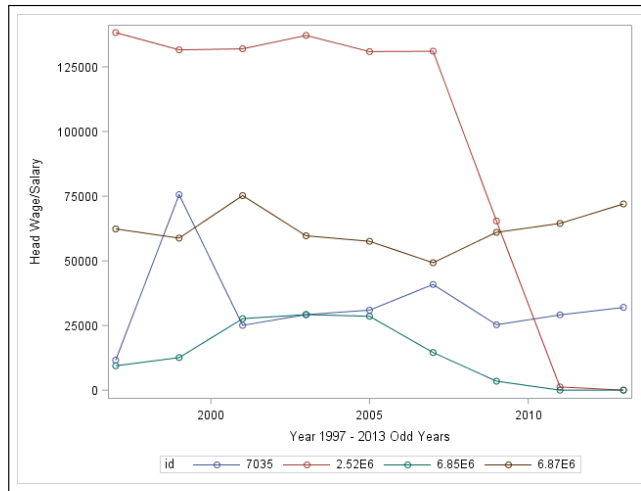


Figure 8.6: Predicted Wages/Salary by Sample, among all ages

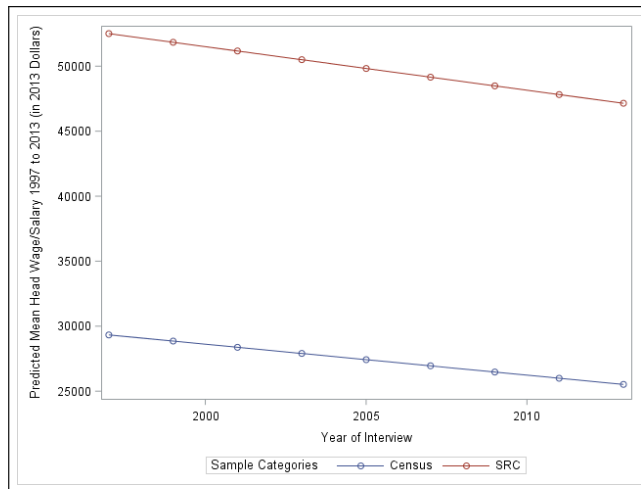


Figure 8.7: Predicted Wages/Salary by Sample and Gender, among those age 30-65

